



HOPETOUN  
Primary School



## NEWSLETTER

Hopetoun Primary School

PO Box 251 Hopetoun WA 6348

hopetoun.ps.admin@education.wa.edu.au

Phone 08 6823 1000

NO 4 WEEK 5 TERM 2

27 MAY 2022

### SPECIAL NOTES

Monday 30 May— Friday 3 June

National Reconciliation Week

Friday 3 June

PE AFL Clinic. PP—Year 6

Monday 6 June

WA Day Public Holiday

Wednesday 8 June

Lake King Skills and Drills.  
Year 4/5/6—Excursion

Monday 13— Friday 17 June

P&C Book Fair Undercover Area

Monday 13 June

P&C Meeting—2:45pm. Staffroom

Tuesday 14 June

Spare Part Puppet Theatre  
Incursion

Friday 17 June

Faction Cross Country

Tuesday 28 June

NAIDOC Assembly

Thursday 30 June

Reports emailed home

Friday 1 July

Newsletter

### Uniform Shop

Karrina Smallman

Uniform Coordinator

ksmallman@bigpond.com

Tel: 0428 133 044

### Hopetoun Primary School Purpose

Through a safe and caring  
environment Hopetoun  
Primary School encourages  
all children to strive for  
excellence in all aspects of  
academic, social and  
personal development in  
order to participate in and  
contribute to the community.

Dear Parents and Caregivers,

We've had a very eventful 5 weeks of term and I continue to be inspired by the positive behaviour, enthusiasm and engagement of our students at school. Our council has noted our revised 'Good Standing Policy', which outlines our approach to behaviour and expectations and incentives for all our students in maintaining their good standing. This policy is publicly available on our website and will support the school in maintaining high expectations of our students, and acknowledging students for demonstrating our school values regularly.

Our Year 3 and 5 students recently completed their NAPLAN testing online, which ran very smoothly for all involved. NAPLAN reports are expected to be released in Term 3 and a copy will be provided to parents of participating students. The data from NAPLAN is used to review our teaching and learning approaches and reflect on our strengths and areas for ongoing improvement. The Walk to School Day last Friday was a great opportunity for the community to once again, come together and enjoy a beautiful walk from Front Beach to the school. Thanks to all involved in supporting such a successful event.

We are currently updating our Parent Handbook for 2022, which will provide comprehensive information about all aspects of our school for current and new families. Once this is complete, we will provide a copy to all students to take home and make it available on our website. The Handbook will be updated each year to reflect any changes. Our first parent assembly was held on Tuesday morning. I would like to congratulate our recipients of merit awards, Aussie of the Month, Masterpiece and Class Reps who were announced during the assembly.

We are so thankful to be able to return to 'normal' with parents spectating events on school site, and parent teacher meetings being able to take place face-to-face. Just a friendly reminder that parents can collect their 20 Rapid Antigen Tests (RATs) from the school per child. These are available in the school office. I would like to thank our parents who continue to advise the school of any positive cases of Covid-19, including whether students are household close contacts of a positive case. This is important as we continue to minimise any spread within the school and community.

As we look forward, there are some exciting things taking place for our students. We have our Cross Country taking place soon, along with our Lake King Skills and Drills Carnival for Years 4, 5 and 6 students. We've adjusted our Kindergarten timetable to enable our Kindy students to participate in the Cross Country experience. We also have a PP-6 AFL Clinic, Puppet Theatre Incursion and NAIDOC events taking place this term. Keep an eye out for information around these events.

Our next newsletter is in Week 10. As always, please don't hesitate to contact me to discuss any questions or concerns you may have.

Kind Regards,  
Kieran Moore  
Principal



*Our Vision: HOPE by the sea – Helpful, Organised, Persistent, Excellent*



**HOPETOUN**  
*Primary School*



## NATIONAL WALK TO SCHOOL DAY

National Walk to School Day took place on Friday 20 May and what an incredible turn out we had from our students, staff and parents.

Our walk started at Front Beach, proceeded up Veal Street and finished at our school where the students were greeted with a special Walk to School stick on tattoo, followed by a free muffin and milo which were kindly donated by our parents.

A special thank you to Constable Kerr who ensured all the students, staff and parents were kept safe on the walk to school.







HOPETOUN  
Primary School



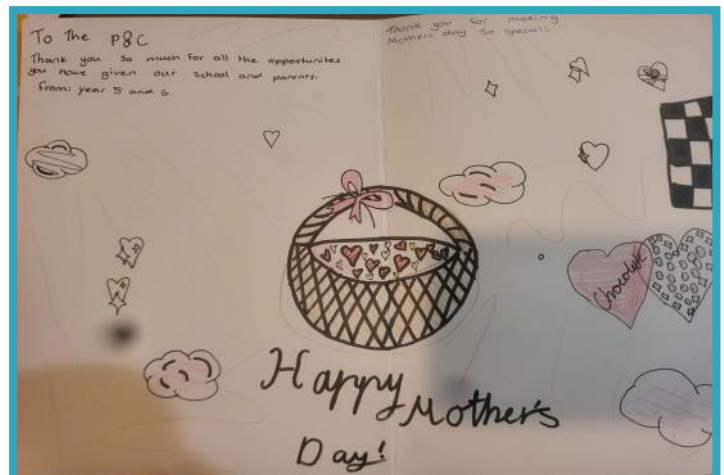
## P&C DAY

On Friday 20 May, Hopetoun Primary School celebrated P&C Day. In the lead up to this, our students wrote thank you cards for our P&C committee to show their appreciation for all the hard work that they do to raise money for our school.

We thank you for all of your hard work all year round!



# Thank you!







HOPETOUN  
Primary School



## WHOLE SCHOOL ASSEMBLY



### Aussie of the Month Winners

Zoe— Year 3 and Isabella—Year 2



### Master Piece Winners

Ryker—Year 1 and Miah—Year 4

### Merit Award Winners

L-R

William, Stella, Katelyn, William, Sam, Dylan, Boston, Charles, Magnus, Amarah and Zayden



# HOPETOUN PRIMARY SCHOOL

## TERM 2 PLANNER 2022

Week	Monday	Tuesday	Wednesday	Thursday	Friday
1	25/4 Anzac Day - Public Holiday	26/4 School Development Day	27/4	28/4	29/4
2	2/5	3/5	4/5	5/5	6/5
3	9/5	10/5 NAPLAN Testing Year 3 & 5	11/5 NAPLAN Testing Year 3 & 5	12/5 NAPLAN Testing Year 3 & 5	13/5 NAPLAN Testing Year 3 & 5
4	16/5 School Council Meeting 6pm	17/5	18/5	19/5	20/5 National Walk to School Day
5	23/5	24/5	25/5	26/5 National Sorry Day	27/5 Newsletter
6	30/5 National Reconciliation Week	31/5	1/6	2/6	3/6 AFL PE Clinic Year PP—6
7	6/6 WA Day (Public Holiday)	7/6	8/6 Lake King Skills and Drills 4/5/6's— Excursion	9/6	10/6
8	13/6 Book Fair— Undercover Area  P&C Meeting 2:45pm	14/6 Book Fair— Undercover Area  Spare Part Puppet Theatre— Incursion	15/6 Book Fair— Undercover Area	16/6 Book Fair— Undercover Area	17/6 Book Fair— Undercover Area  Faction Cross Country
9	20/6	21/6	22/6	23/6	24/6
10	27/6	28/6 NAIDOC Assembly	29/6	30/6 Reports emailed home	1/7 Last day of School  Newsletter





HOPETOUN  
Primary School



## COMMUNITY NOTICES



### "YouthCARE Chaplains Needed!"

YouthCARE is currently seeking Chaplains for schools in the Esperance region. YouthCARE is WA's major provider of Chaplaincy services and the preferred provider for the WA Department of Education. Over 400 YouthCARE Chaplains are in over 600 WA schools to promote school wellbeing and positive school communities. Chaplains have faith-based Christian values and care for the social, emotional and spiritual wellbeing of school communities demonstrating YouthCARE's core values of Respect, Compassion and Service.

In schools, Chaplains provide and support:

- pastoral care for students, staff and families,
- strong community links to support children and families,
- key school pastoral care programs and support for school events.

All YouthCARE Chaplains receive comprehensive training prior to and after undertaking their chaplaincy role. This includes an induction program, ongoing professional development, and support and supervision by both Area Chaplains and self-care professionals.

If you are interested in learning more about School Chaplaincy please contact Lindsay Campbell [YouthCARE Area Chaplain] on 0428 959 766

# SOUTH'S IPOD SHUFFLE

BUY A SONG. IF YOUR SONG PLAYS,  
YOUR OUT OF THE RACE. LAST SONG  
WINS A PRIZE!

**SAT 28TH MAY.  
HOPETOUN  
SOUTHERNERS  
CLUB ROOMS.**

COME JOIN US FOR A  
CASSEROLE DINNER  
FROM 5.30PM.  
EVERYONE WELCOME

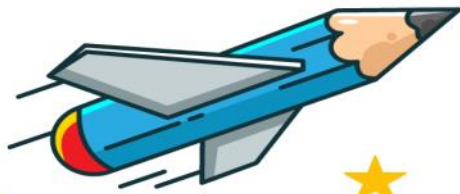




HOPETOUN  
Primary School



## COMMUNITY NOTICES



### HOPEY STUDY CLUB FOR SCHOOL YEARS 2 - 6

Every Thursday 2.45pm - 3.50pm  
During school terms  
Bookings essential visit  
[www.hopetounwa.com/events/hopeystudyclub](http://www.hopetounwa.com/events/hopeystudyclub)



All skill levels and ages welcome!



### WEEKLY TABLE TENNIS SOCIAL CLUB

EVERY MONDAY 4PM-5.30PM



Come along for a friendly social game of table tennis each week  
on a Monday at Hopetoun Community Hall.

\$5 entry fee per week - children 16 and under are free.



### LITTLE BEAT BOP

EVERY MONDAY  
DURING SCHOOL  
TERMS

9.15 AM - 9.45 AM



Hopetoun Community Centre

Join us for a morning of  
Dance, Music & Movement  
From ages 0-5.

Gold Coin Donation



Free stories, songs, rhymes & craft

### Storytime

Every Monday during school terms

10.00am - 10.45am

Ages 0-5 years old

